

TONIGHT'S EVENT FORMAT



- **What We've Learned**

Please check out the contextual **boards** positioned around the outside of the room. We know much planning has been done, and we have learned from these efforts.



- **What We've Heard from You**

Grab a seat for a **brief presentation**. We will share with you our findings from many engagement efforts and discuss some responsive, early action items.



- **Let's Build Together**

Put on your planning cap and get creative. We will have rotating **breakout groups** relating to safety, public space, mobility, and the future street design of Mattapan Square.



- **Evaluate Us**

Please take a minute to **fill out the event evaluation form**. Your feedback helps us serve you best going forward.

BLUE HILL AVE.

Transportation Action Plan

Lindiwe Rennert | BTB Transit Planner
lindiwe.rennert@boston.gov



PRESENTATION AGENDA



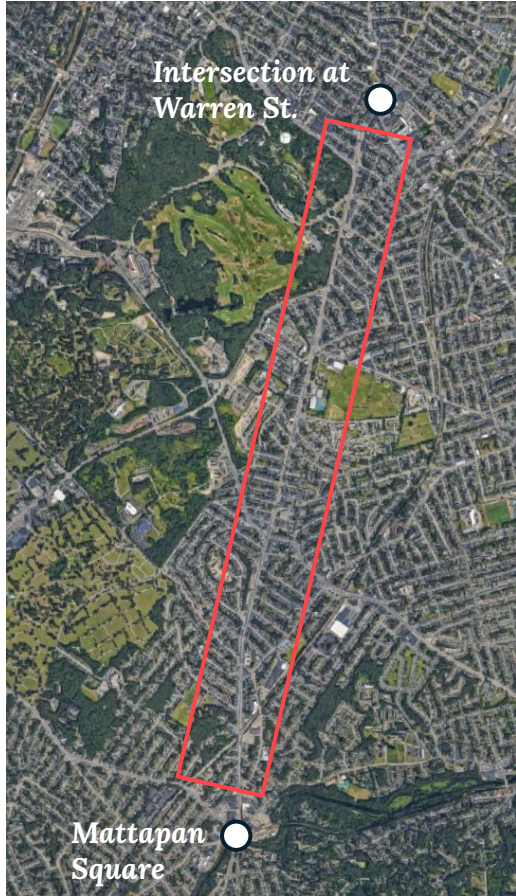
- **Project Mission + Overview**
- **What We've Heard from You**
- **Early Action Items**
- **Related Ongoing Projects + Planning Efforts**

PROJECT ORIENTATION

What is at this Project's Core



ORIENTATION



Project Extent

- *Blue Hill Avenue: South of the intersection of Warren Street and Blue Hill Ave. at Grove Hall and north of Mattapan Square*
-

Connecting Projects

- *BTD is currently leading projects along Warren Street and within Mattapan Square*

PROJECT MISSION

The Blue Hill Ave. Transportation Action Plan seeks to *improve quality of life* for corridor users as well as improve the City's current state of *transportation-related equity* by reimagining how everything, including and between the avenues sidewalks, functions.

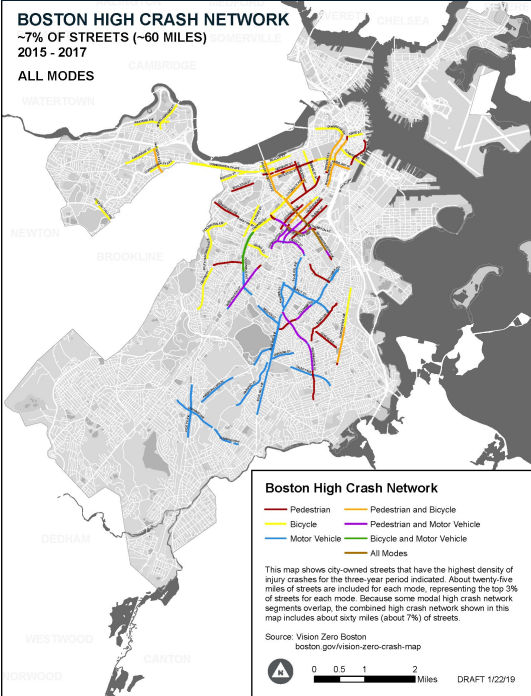


PROJECT MOTIVATION

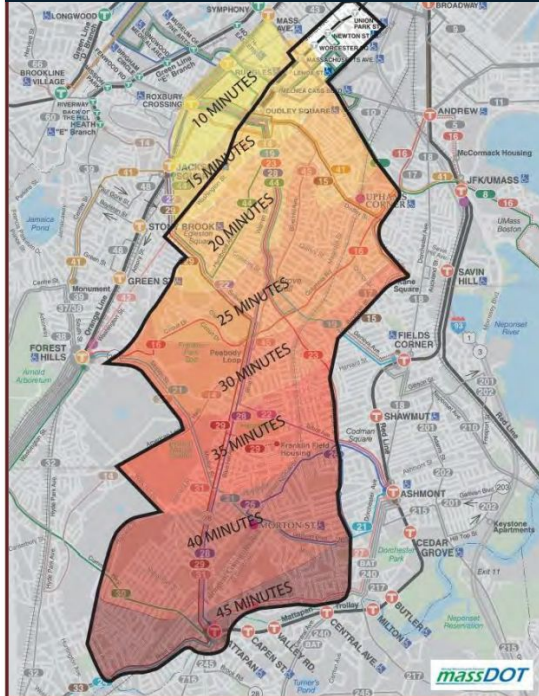
Severe Safety Concerns

BOSTON HIGH CRASH NETWORK
 ~7% OF STREETS (~60 MILES)
 2015 - 2017

ALL MODES



Travel Time Inequities



Community Desire

VISION People's Voice | Boston Today Goals and Targets **ACTION PLAN** People's Voice | Boston in 2030 Projects and Policies

Crosstown

Mattapan to LMA Rapid Bus

Faster transit connections to the medical district from southern Boston

Project Score

- Access 1
 - Safety 1
 - Reliability
 - Sustainability/Resiliency 1
 - Sustainability/Resiliency 2
 - Governance
 - Access 2
 - Safety 2
 - Affordability
- #19 in weighted Boston-only public voting

Project Description

A new transit line with high-quality stops, signal priority, all-door boarding, and some exclusive lanes will create direct transit connections for residents of Mattapan and southwest Dorchester to jobs and medical care in Roxbury, Mission Hill, and the Longwood Medical and Academic Area. This involves a rail-like bus service operating where excess roadway width exists today on one of several potential corridors that will be determined in conjunction with the community. Service would be high capacity and high frequency and could interline with the JFK/UMass to LMA rapid bus corridor (p176) and even the West Station to LMA connection (p203), connecting together southern Boston, the LMA, and Beacon Yard. Future upgrades could include and structure service initiated as ridership grows.



Implementation

Approximate Cost: \$15 million for design and construction; vehicle costs to be determined
Potential Funding Sources: City capital budget for design; Boston MBTA for roadway construction and MassDOT/MBTA for vehicle costs
Who's Responsible: MBTA and MBTA with MassDOT/MBTA
Time Frame: Within 5 to 15 years in conjunction with local community process

Best Practices

The Cleveland, OH, Healthline has the min frequency during rush hours, 24/7 service, all-board fare collection, dedicated BOW with higher speed limits and more information displays, "station" style fare machines, emergency call boxes, and elevated platforms
www.vdotva.com/healthline/about

Benefits and Issues Addressed

This investment will support economic opportunity along a corridor with heavy bus ridership but unreliable service, while—depending on the alignment—potentially improving other connections that lead into Dudley Square and Downtown as well. Crosstown connections from this part of the city are in high demand, as shown by the rider-ship rates on "diagonal" routes such as the 29, yet these routes have poor reliability. Poorly served riders, plus many more residents of Dorchester and Mattapan who are not near these diagonal routes today, must either drive—adding to the congested traffic on Mission Street—or take into Downtown then back out to the LMA on the train. Replacing these lengthy, indirect, and unreliable transit connections with a high-quality single-seat ride will benefit thousands, improve job access, and also attract new transit riders.



Public Input

"Transit investments are critical to the city's continued viability. Our rapid transit needs major investment in its capacity, from the government side and in many underserved neighborhoods that are among the most transit-dependent sections of the entire metropolitan region (e.g., Washington Street Corridor through Roxbury and continuing through Grove Hall to Mattapan Square)—investing prerequisites to ensuring the continued development of Boston by providing the critical infrastructure that can support our growing public transportation system."

—G1118

Go Boston 2030

180

With increased **staff capacity**, we can now give Blue Hill Ave. the attention and investment it deserves.

BUILDING ON RECENT WORK

Neponset River Trail

August 2015
Created green connector along much of the City's waterfrontage



New BlueBikes Stations

As of September 2018
5 Bluebikes Stations along Blue Hill Avenue



Age Strong Benches

Summer 2019
Age Strong is placing benches in shaded spots along BHA



Mattapan Sq. Beautification

Summer 2016
Added greenery to medians and repaired sidewalks in the square



Blue Hill Rail Station

February 2019
Increased access to Downtown and locations along the Fairmount Corridor



CITY DEPARTMENTS IN ATTENDANCE

Though the **Boston Transportation Department** is leading this Action Plan...

... we are working closely with many other City departments.





WHAT WE'VE HEARD

You've Been Engaging and We've Been Listening

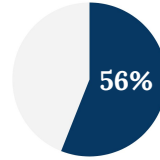
BTD CALL FOR IDEAS SURVEY FINDINGS

589
responses

71%
locals

Respondents who live in ZIP codes that BHA touches directly

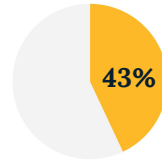
TRANSPORTATION



reported feeling that cars travel too fast along BHA

Double Parking
is a major cause of chaos + congestion

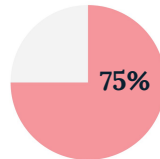
SAFETY



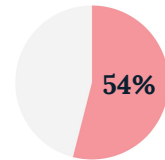
reported being, or knowing someone, in a crash on BHA

Morton Street
Most frequently listed unsafe intersection

PUBLIC REALM



want more trees and greenery along the corridor



want real-time bus arrival displays

BPDA PLAN MATTAPAN ENGAGEMENT FINDINGS



122
Engagement
Opportunities

~800
Community
Voices

PUBLIC REALM

The corridor has some great paths, parks, and playgrounds, but the **wayfinding** directing you to those assets **is lacking**.

Long and straight, BHA could be a great candidate for a cohesive series of murals. **The avenue could be both a major artery and a public art gallery.**

TRANSPORTATION + SAFETY

Kids in particular want bike facilities. Streets don't have to be all business and stress. They can also **facilitate joy and provide healthy fun.**

Parents **report driving their kids to places that are a walk away**, or accessible by transit, because they worry about the safety of their kids traveling on BHA.

Flashing crosswalk warning signs could be put in the median to increase driver awareness of pedestrians.

Lack of enforcement makes people feel free to double park and allows loading trucks to take entire travel lanes. This leads to car/bus weaving and other unsafe driving behavior.

LIVABLESTREETS ALLIANCE ENGAGEMENT FINDINGS



7

Engagement
Events

200

Community
Voices

PUBLIC REALM

Most frequently desired enhancements:

1. Real-time Bus Arrival Info. Display
2. Better Street Lighting
3. More Street Art

“I want to see more of my neighborhood’s history along Blue Hill through art.”

TRANSPORTATION

Top challenges to traveling along Blue Hill Avenue:

1. Overcrowded buses
2. Inconvenient weekend bus schedules
3. Unreliable bus service
4. Poor bus etiquette
5. Vehicle traffic/congestions
6. Poor road conditions

Strong desire for bike infrastructure, bus lanes, and for every bus stop along BHA to have a shelter.

All the rules and regulations mean nothing if they are not enforced.

“Nothing would improve my BHA experience more than a lower bus fare.”



EARLY ACTION ITEMS

City Agencies Turning Community Feedback into Action

RELATED TO: PUBLIC REALM

2019

- **New Benches**
Introduced to Mattapan Square and along the corridor

2020

- **Tree Planting**
Between Grove Hall and Franklin Park

- **Replace the Banners**
Along the median in Mattapan Square

- **Sidewalk Mural**
In front of the Mattapan Library

- **Replace Existing Trash Cans**
Along the corridor with cans that have tops/lids

- ← ● **Expand the City's PaintBox Program**
Throughout the corridor

- **Use Murals**
As wayfinding directing drivers to public parking lots



RELATED TO: SAFETY

- **Speed Feedback Sign Installation**
Southbound on Blue Hill Ave. at Walk Hill
- **Upgrade the BHA American Legion Intersection**
With new signal equipment, timing changes, and accessible ramps
- **Sidewalk and Ramp Improvements**
At the intersections of Baird, Balsam, and Harvard
- **Pedestrian Crossing Retiming at Intersections**
Looking specifically at Seaver, Talbot, Morton, and Columbia

2019

2020

- **Safety Signage Campaign**
Throughout the corridor and neighboring communities



RELATED TO: MOBILITY

2019

- **Speed Feedback Sign Installation**
Southbound on Blue Hill Ave. at Walk Hill
- **Curbside Regulation Changes**
To minimize double parking and loading violations

2020

- **Street Repaving**
From Dudley Street to Milton border
- **Activation of Transit Signal Priority**
At every capable major intersection along Blue Hill Ave.
- **Bike Box**
At the intersection of Warren Street and Blue Hill Ave.





OTHER PROJECTS

Large-scale Related Projects to Tune in to

RELATED PROJECTS + PLANNING EFFORTS



Planning and
Development Agency



Public Works



Parks and Recreation



Transportation

- **PLAN Mattapan**
Community-lead plan for Mattapan's future growth
Next public meeting: mid-November
- **Repaving of Blue Hill Ave.**
Both directions from Dudley St. through Mattapan Square
Starting in Spring of 2020
- **Franklin Park Masterplan**
Crafting a vision for the upcoming \$28 million investment
Planning process currently in kick-off phase
- **Traffic Signal Upgrades**
Several intersection retimings and reconstructions
Currently in construction: see board in the back for details



BREAKOUT GROUPS

Let's Build Together

GROUPS + ACTIVITIES

We will rotate groups every



There is enough time for 3
sessions, so pick the



that you are most interested in

- **Public Space**
Mural and Banner Design Lab
- **Motorized Mobility**
Build an Enforcement Strategy that works for BHA
- **Road Safety**
Craft a new Safety + Awareness Campaign
- **Mattapan Square Design Alternatives**
Comment on the 3 Design Alternatives for the Square
- **MassDOT/MBTA New Service Proposals**
Propose new MBTA service that better meets your needs